



UNIVERSITY OF CAMBRIDGE INTERNATIONAL EXAMINATIONS  
General Certificate of Education Advanced Subsidiary Level and Advanced Level

---

**GEOGRAPHY**

**9696/32**

Paper 3 Advanced Human Options

**May/June 2012**

INSERT

**1 hour 30 minutes**

---

**READ THESE INSTRUCTIONS FIRST**

This Insert contains all the Figures referred to in the questions.


---

This document consists of **4** printed pages.




Fig. 1 for Question 2

Extract from the website of BEPZA, 2011



# Bangladesh Export Processing Zones Authority (BEPZA)



Home   Reports   Archive   Album   Contact Us   Site Map   Login

## Incentives & Facilities Offered by BEPZA

### Tax Incentives

1. 10 years tax holiday
2. Duty free import of machinery and equipment
3. Duty free import and export of raw materials and finished goods
4. Duty and quota free access to EU, Canada, Australia, etc.

### Other Incentives

1. 100% foreign ownership allowed
2. No ceiling on investment
3. Capital and dividend received in full
4. Special foreign currency rules

### Special Facilities

1. Work permits issued by BEPZA
2. Secure, protected, bonded area
3. Customs clearance at factory site
4. Simplified administrative procedures

Fig. 2 for Question 3

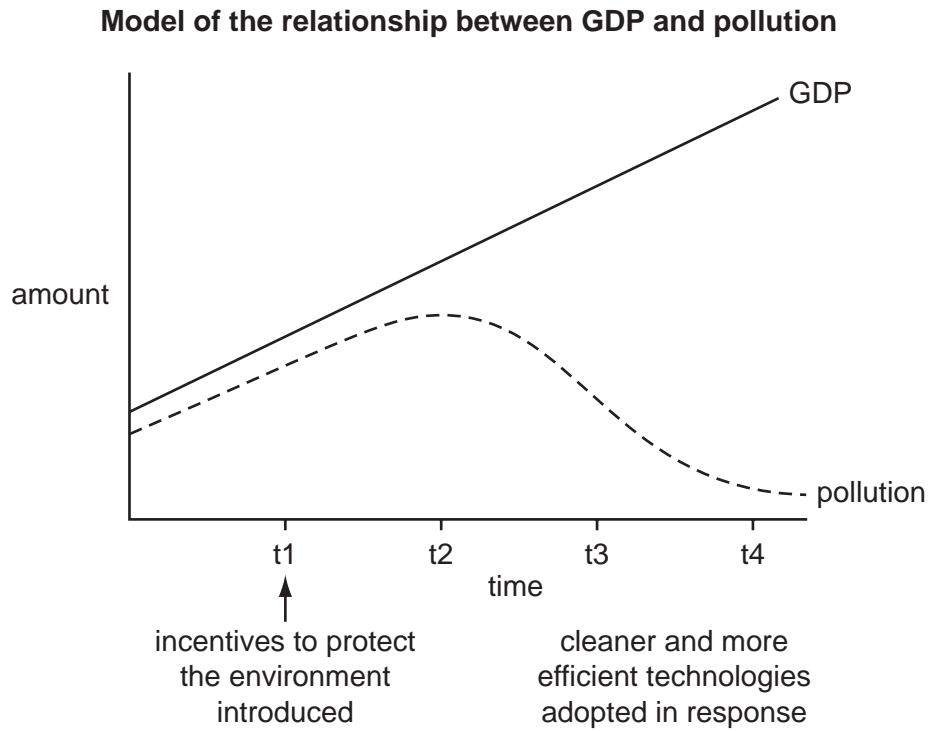


Fig. 3 for Question 5

Top 10 countries in Africa receiving development aid, 2006–8

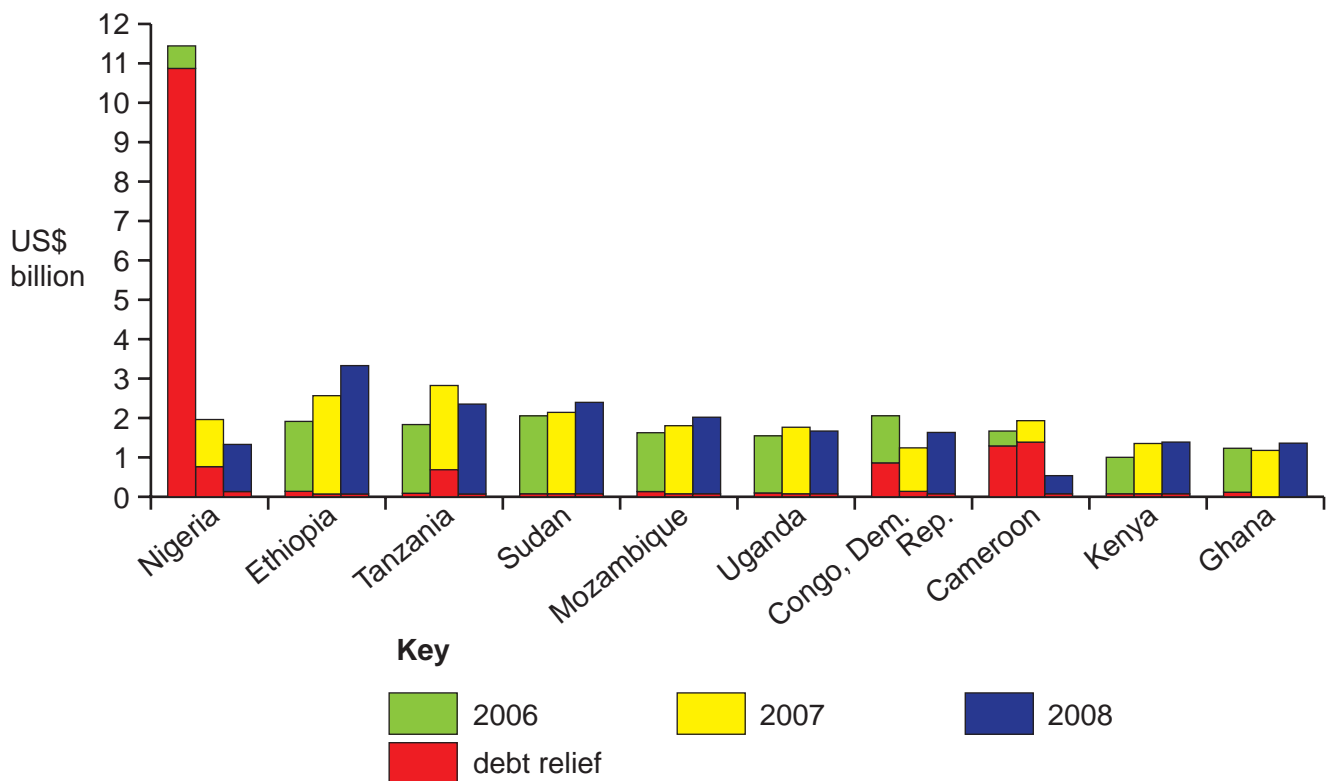
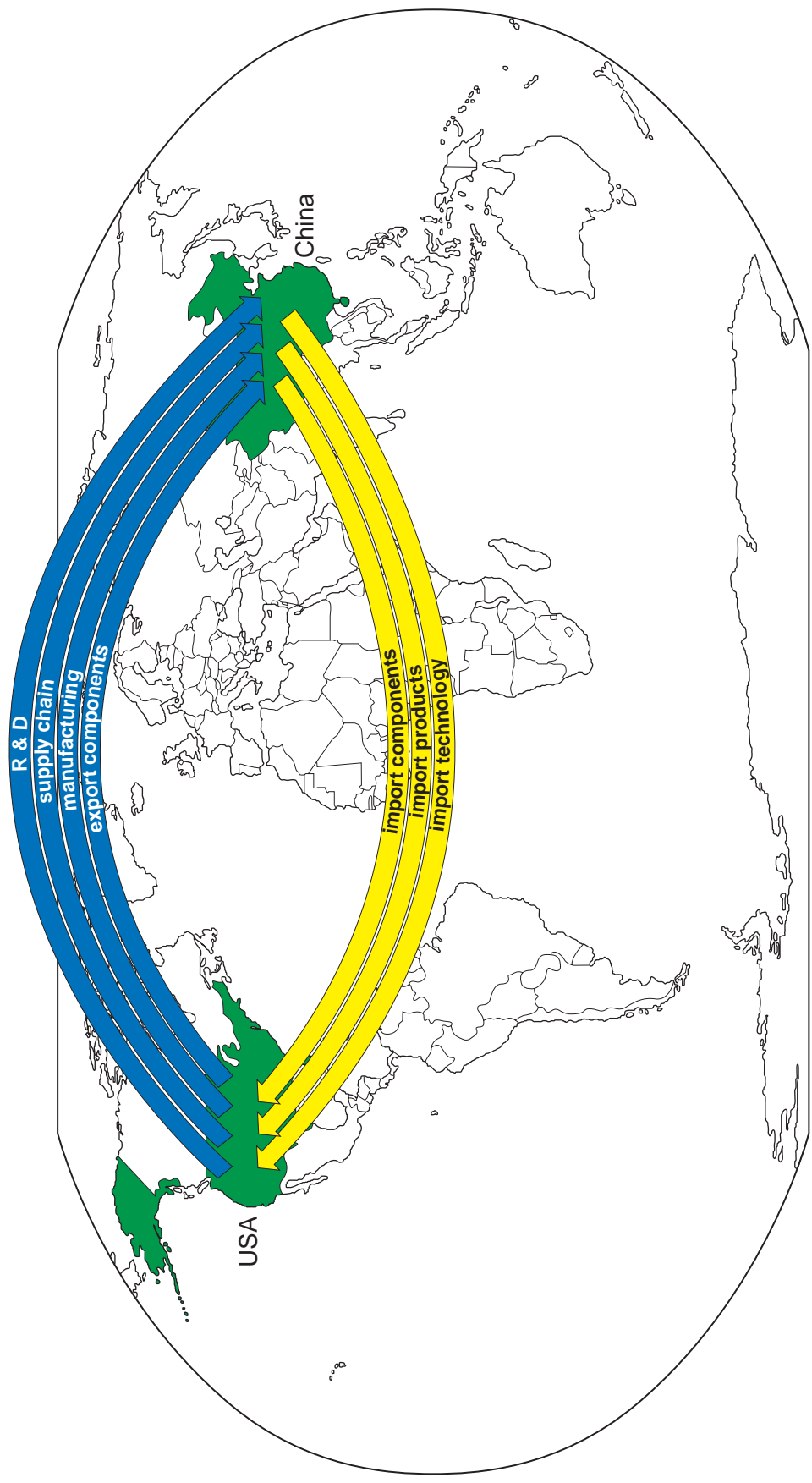


Fig. 4 for Question 7  
Manufacturing industry: relationships between the USA and China



Permission to reproduce items where third-party owned material protected by copyright is included has been sought and cleared where possible. Every reasonable effort has been made by the publisher (UCLES) to trace copyright holders, but if any items requiring clearance have unwittingly been included, the publisher will be pleased to make amends at the earliest possible opportunity.

University of Cambridge International Examinations is part of the Cambridge Assessment Group. Cambridge Assessment is the brand name of University of Cambridge Local Examinations Syndicate (UCLES), which is itself a department of the University of Cambridge.